

MONTHLY MEMBERSHIP PROGRESS REPORT

District 325 I

Results as of: 5/31/2024

GMT:

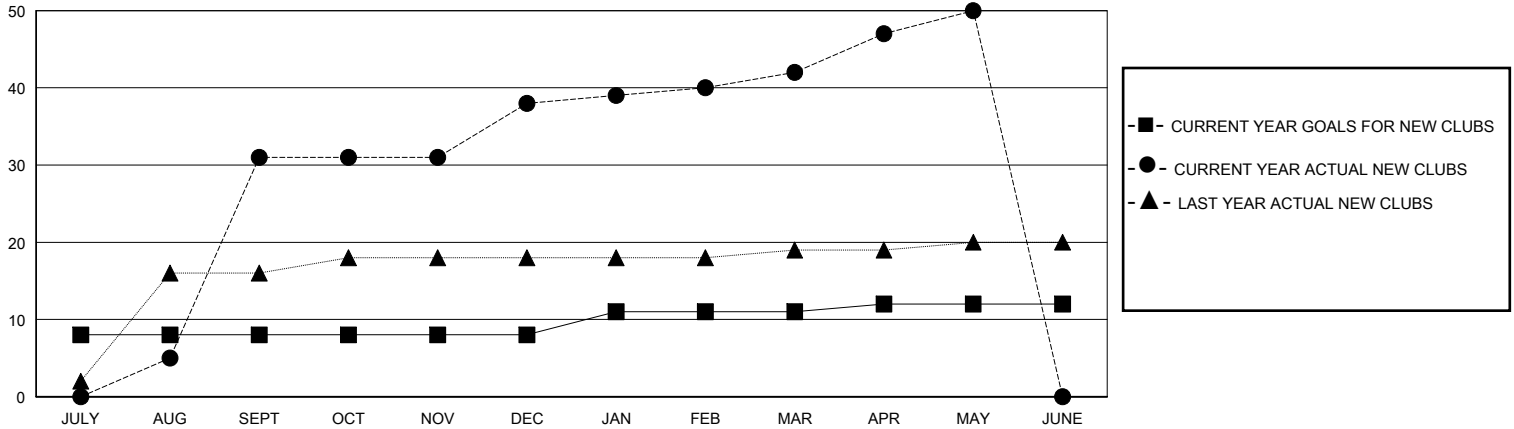
LOCATION NEPAL

GMT CA

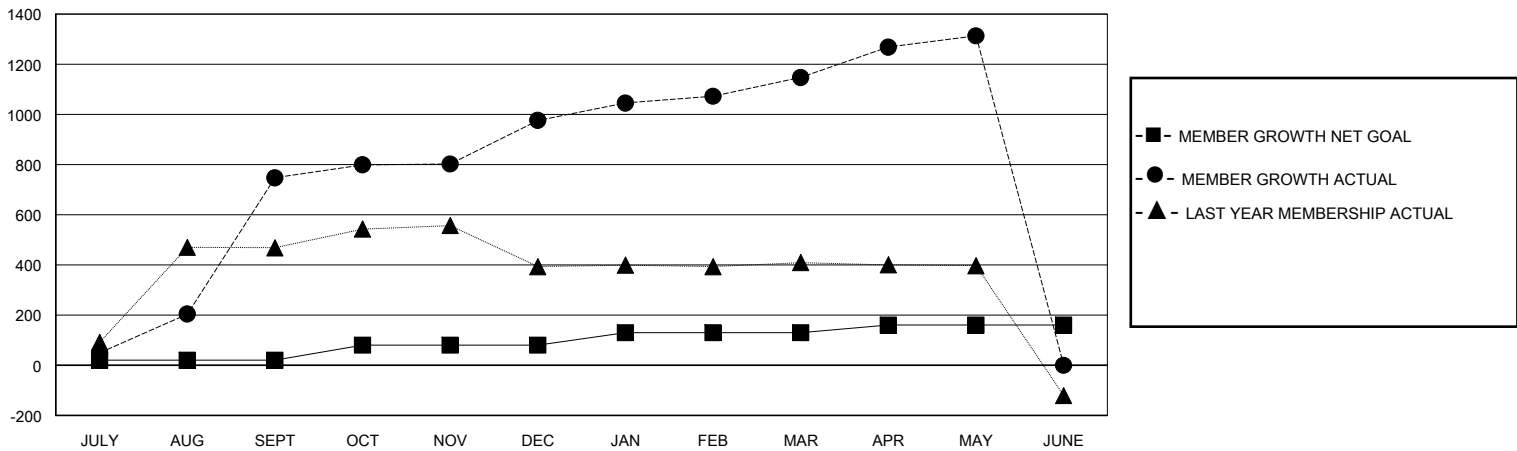
Clubs			
RESULTS FOR 2023-2024			
QUARTER	NEW CLUB GOAL	NEW CLUBS	DROPPED CLUBS
JULY/AUG/SEPT	8	31	3
OCT/NOV/DEC	0	7	1
JAN/FEB/MAR	3	4	1
APR/MAY/JUNE	1	8	2

Members			
RESULTS FOR 2023-2024			
QUARTER	MEMBER GROWTH NET GOAL	MEMBER GROWTH ACTUAL	DROPPED MEMBERS ACTUAL (including transfers)
JULY/AUG/SEPT	20	880	123
OCT/NOV/DEC	60	389	146
JAN/FEB/MAR	50	245	71
APR/MAY/JUNE	30	229	44

GOALS AND ACTUAL NEW CLUBS CUMULATIVE



GOALS AND ACTUAL MEMBERS CUMULATIVE



DROPPED CLUBS: 7	160 CLUBS OF 194 ADDED 1 OR MORE NEW MEMBERS	GENDER DISTRIBUTION	
		MALE 2,814 (65.99%)	FEMALE 1,450 (34.01%)
DROPPED MEMBERS		CLICK HERE FOR CUMULATIVE MEMBERSHIP DATA	TOTAL FAMILY UNIT MEMBERS 4,039
DECEASED 0	CLUB CANCELLED 22		FAMILY MEMBERS PAYING HALF DUES 3,064
OTHER 360	TOTAL 382		